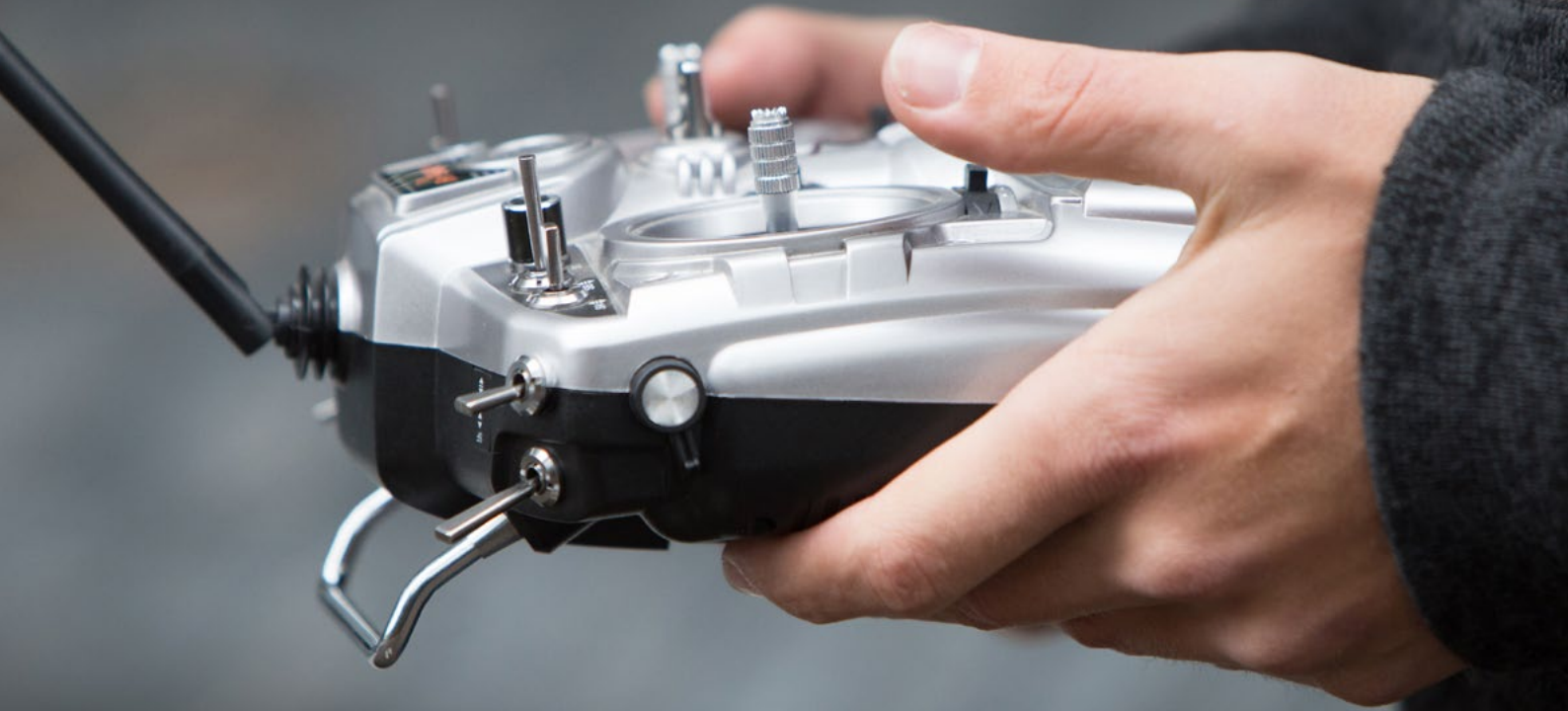




**Oregon State**  
University



# INVENT YOUR FUTURE

at Oregon State University





INTO OR

# START AT OREGON STATE UNIVERSITY

**TOP 1.4%**

GLOBAL UNIVERSITY  
*Center for World University Rankings 2020*

**#82**

BEST PUBLIC UNIVERSITY  
*Times Higher Education 2020*

**450+**

COMPANIES RECRUITING STUDENTS FROM OREGON STATE UNIVERSITY  
*University Data 2020*

**TOP 15%**

BEST PAID GRADUATES IN THE US  
*PayScale College Salary Report 2019*

**#41**

TOP RESEARCH UNIVERSITY  
*Best College Reviews 2021*

**TIER 1**

HIGHEST RESEARCH ACTIVITY  
*Carnegie Classification of Institutions of Higher Education*

**#1**

SAFEST COLLEGE CAMPUS IN THE US  
*ADT News and Resources 2018*

**#1**

BEST CITY TO LIVE IN OREGON  
*Chamber of Commerce 2019*



## TOP PROGRAMS



### UNDERGRADUATE

**#1 NATURAL RESOURCE MANAGEMENT**  
*College Factual 2020*

**1% MOST POPULAR COMPUTER SCIENCE PROGRAM IN THE US**  
*College Factual 2020*

**#24 AGRICULTURAL SCIENCES**  
*QS World University Rankings 2020*

**#37 EARTH AND MARINE SCIENCES**  
*QS World University Rankings 2020*

**#63 ENGINEERING**  
*U.S. News & World Report 2021*

**#71 COMPUTER SCIENCE**  
*U.S. News & World Report 2021*

**#116 BUSINESS**  
*U.S. News & World Report 2021*

### GRADUATE

**#5 HUMAN DEVELOPMENT AND FAMILY STUDIES**  
*College Factual 2020*

**#7 ROBOTICS**  
*Analytics Insight 2019*

**#18 SUPPLY CHAIN AND LOGISTICS MANAGEMENT**  
*College Choice 2018*

**#21 BIOLOGICAL/AGRICULTURAL ENGINEERING**  
*U.S. News & World Report 2020*

**#42 ENVIRONMENTAL ENGINEERING**  
*U.S. News & World Report 2020*

**#43 CIVIL ENGINEERING**  
*U.S. News & World Report 2020*

**#49 INDUSTRIAL ENGINEERING**  
*U.S. News & World Report 2020*

**#58 ELECTRICAL ENGINEERING**  
*U.S. News & World Report 2020*

**#68 COMPUTER SCIENCE**  
*U.S. News & World Report 2020*

### AT A GLANCE

Founded: 1868

Campus: Corvallis, OREGON

City Population: 58,000

Campus Size: 400 acres

Enrollment: 32,774

International Students: 3,492

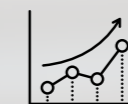
Countries Represented: 112

Bachelor's: 200+

Master's/PhD: 80+

Additional Campus: Bend, OREGON

## EMPLOYABILITY



**\$20,000**  
HIGHER AVERAGE SALARY

for OSU bachelor's graduates compared to national average 10 years after graduation.

*US Department of Education / Department of Treasury 2019*

### OSU'S GRADUATES have gained employment with:

Adidas	Dell Inc.	Nvidia
Amazon	Deloitte	Pixar
Apple	Google	SpaceX
Boeing	HP	Tesla
Coach	Intel	
Columbia Sportswear	Nike	

### ONLINE LEARNING WITH HANDS-ON EXPERIENCE

In addition to its campus locations, OSU also has the No.4 ranked Ecampus program\* which is anything but one-dimensional. Engage in career-making internships. Gain expertise from faculty and field studies from where you choose to learn.

*"Studying from India was a little challenging, but also really fun, mainly because the faculty did a great job of making themselves accessible. My professors made that extra effort to actually give real-world experiences."*



**Patric, India**  
BS in Business Administration

## RESEARCH

**NEARLY \$450M**  
IN RESEARCH FUNDING

*University Data 2020*

### LAND, SEA, SPACE AND SUN GRANT

As a leader in climate change research, OSU is one of only 3 [alongside Penn State and University of Hawaii] US universities to have Land, Sea, Space, Sun grant designations. This means OSU is involved with research in all four areas.

*\*U.S. News @ World Report 2021*



# Your Path Starts **HERE**



*"One of my favorite classes was BA160, which is required for all business students. What's so fun about that class is that you get to start an actual company during the school year and you have to meet the profit goal at the end of the term."*

Doris, Taiwan  
BS in Merchandising Management  
Student Teaching Assistant at OSU and intern with D.A. Consortium Inc.



*"I did my first MECOP internship at Siltronic AG, a silicon wafer manufacturing company located in Portland, Oregon. And I worked as a process engineer intern at an engineering department focused on wafer slicing processing for six months. I did my second internship at Element Six. They are a lab-grown diamond manufacturing company. I was assigned as a process engineering intern. This time, I was able to explore different aspects of engineering, and the projects were related to various fields in engineering."*

Shinyoung, Korea  
BS in Chemical Engineering  
MECOP Intern, Class of 2021



# Your Future is **OUT THERE**



*"The best thing I experienced at Oregon State University that I am able to apply in my work, was the practical knowledge and exposure to projects earlier in my studies. The very first term at Oregon State University, I studied a subject called design for safety. And in that, and in that very first course, I was introduced to a lot of practical knowledge."*

Amit, India  
MEng in Civil Engineering, Class of 2019  
Field Engineer at Turner Construction - Salem, OR

## THE INTO OSU ADVANTAGE

INTO OSU is one of the oldest and most integrated Pathway programs in the US. OSU's commitment to international education is evident in the purpose-built, five-story International Living-Learning Center. The center is a vibrant global hub of student life and educational activity which also houses the INTO OSU Center.

### INTO OSU provides services such as:

- Personalized academic, language and cultural support
- Targeted tutoring and self-study learning support resources
- Your own academic success and personal advisor
- Comprehensive orientation with free airport pickup
- English Conversation Partner Program
- Social events and trips around Oregon
- 100+ INTO OSU and OSU staff and teachers to support students

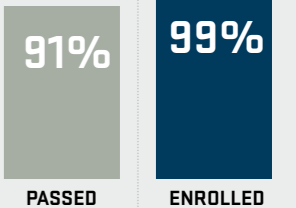


## INTO OSU SUCCESS

**91% OF ALL PATHWAY STUDENTS WERE ELIGIBLE TO PROGRESS AT OSU IN 2019-20.**

Eligible students are those who successfully completed the Pathway program and qualified for admission as degree-seeking students. Enrolled students are those who enrolled as degree-seeking students in their next term of degree study at Oregon State University.

Undergraduate and Graduate Progression Rate 2019-2020



## SUCCEED IN INNOVATION NATION

**#10**

BEST COLLEGE TOWN  
IN AMERICA

Best College Review 2019



**581 STUDENTS**

PARTICIPATING IN OPT OR CPT IN 2019

University Data 2019



**#58**

MOST INNOVATIVE  
SCHOOL IN THE US

U.S. News & World Report 2021

**400+**  
STUDENT CLUBS

**#5**

OCEANOGRAPHY PROGRAM  
in the World

Shanghai Rankings 2021

**4th**

BEST ONLINE  
BACHELOR  
PROGRAM IN THE US

U.S. News & World Report 2021



**#10**

BEST BIG DATA  
degree in the US

College Choice 2018

**#4**

TOP PRODUCING US  
UNIVERSITY FOR  
FULBRIGHT  
SCHOLARS

Fulbright U.S. Scholar Program 2020



**#37**

IN EARTH SCIENCES

QS World University Rankings 2019



# LIVING IN OREGON

## Expand Your Horizons in Corvallis

- Free public transportation
- 45 minutes to the Pacific Ocean
- 90 minutes to Portland
- 5 minutes to HP Research Campus

## Experience Oregon

- No sales tax
- Silicon Forest: home to high-tech companies
- Nike Headquarters in Beaverton, OR
- National Basketball Association: Portland Trail Blazers
- Major League Soccer: Timbers
- Outdoor recreation

## Explore the OSU-Cascades Campus

- OSU Campus located in Bend, OR
- 16 students per class on average
- 1,374 students on campus
- 300 days of sunshine
- 30+ degrees, minors and options, including two campus-specific majors
- Computer Science with option to specialize in web and mobile software development
- 100% job placement for Computer Science graduates
- Specialized internship opportunities in Energy Systems Engineering, Hospitality and Computer Science

## HOUSING AND DINING

### Living in the heart of Beaver Nation

Living on campus places you steps away from all the resources you need to succeed in your first year and beyond. You'll have the most convenient access to your classes, the library, dining halls and the recreation center, while living among American students in a diverse and welcoming community.

### Living-Learning Communities

Living-Learning Communities (LLCs) are academic programs that partner with residential communities on campus. In addition to living among students in the same major, college, academic focus or program, we hold events in your community that are related to your area of interest. Living in an LLC is a great way to create strong connections with other students and to build relationships with faculty and advisers in your program.

### Living On Campus

Program	REQUIRED	NOT REQUIRED
Academic English (AE)		●
International Year One (IYO) / AE + IYO	●*	
International Direct (ID) / AE + ID	●*	
Undergraduate Transfer Program (UTP) / AE + UTP	●*	
Master's International Direct (MID)		●
Graduate Pathway (GPW) / AE + GPW		●

\*Students more than one year past high school graduation are not required to live on campus.

### Bedroom Types

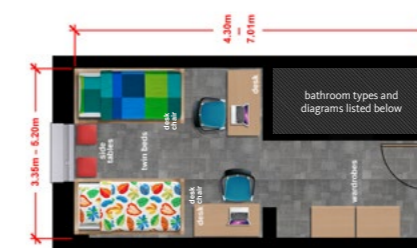
#### Single Room

1 student per bedroom



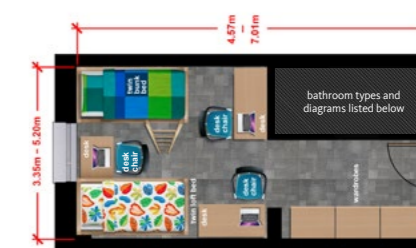
#### Double Room

2 students per bedroom



#### Triple Room

3 students per bedroom



### Bathroom Types

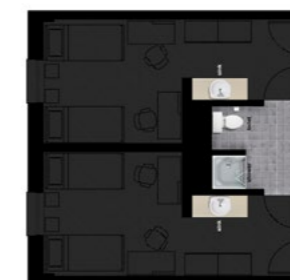
#### Private

Bathroom for 1 bedroom (1-2 people)



#### Suite-style

Bathroom for 2-3 bedrooms (2-6 people)



#### Shared

Bathroom for multiple bedrooms



Note: The floor plans and bathroom types may vary.

### LEARN MORE ABOUT OUR HOUSING OPTIONS:

<https://intoosu.oregonstate.edu/student-services/housing-arrivals>



**MEAL PLANS:** All on-campus housing options include a meal plan.

**Live-on Requirement:** All first-year undergraduate students who enroll at OSU within one year of high school graduation must live on campus. Students more than one year past high school graduation are not required to live on campus.

For more information on this policy, including available exemptions, visit [studentlife.oregonstate.edu/first-year-experience-live-policy](http://studentlife.oregonstate.edu/first-year-experience-live-policy)

Students not required to live on campus may choose to do so, but should carefully review contract length and cancellation policies.

# RESEARCH EXCELLENCE

For more than 150 years, OSU students, alumni and faculty have made outstanding achievements, including developing the artificial heart valve, TRIGA Reactor and wristband samplers that detect environmental chemicals.

## GLUCOSE-SENSING CONTACT LENSES

The contact lens is a hypothetical application of a transparent sensor developed at OSU. The goal is to expand contact lens sensors to a range of tear fluid biomarkers, which can be used to identify a range of ocular disorders (dry eye disease, diabetic retinopathy, glaucoma, etc.), cancers (colon, prostate, breast, lung, etc.), multiple sclerosis and many other diseases.



## ROBOTIC MOBILITY

Imagine if robots had legs and could walk on the same terrain as people. Agility Robotics, a company first developed at OSU, is making robotic mobility a reality. Advanced mobility could change the future by enabling shipping to be more automated and opening up new possibilities in manufacturing and production.



## INNOVATION NATION

First-year business students and their business teammates get to run their own micro business with real money, real profits, real goods and services. Through this interactive experience, you will gain competitive skills, giving you an edge when applying to internships and jobs after graduation.



## HANDS-ON BUSINESS RESEARCH

The College of Business Research Suite is outfitted with cutting-edge technology, space and design to conduct innovative research in business, market trends and consumer insights. Apply your research through entrepreneurship programs and access the C2C Marketing Lab. Students can also participate in the Advantage Accelerator, a unique program designed to assist startups in all stages of their growth. You will work directly with innovators and entrepreneurs to explore markets, develop products and obtain customers.

## FACULTY SPOTLIGHT: PEDRO LOMÓNACO

### LOCAL RESEARCH WITH GLOBAL OUTCOMES:

"The advantage of our discipline in coastal engineering is that the physics of ocean processes can be studied here, but applied elsewhere in the world. The research we do could be a model to show what is going on off the coast in Hong Kong or in Angola, for example. There is no difference in the physics, so the process that we study gives us the opportunity to work with anyone in the world."



# YOUR CAREER STARTS HERE

It pays to be an OSU graduate. OSU alumni who graduated with a bachelor's degree are in the top 15% best paid graduates in the US. *PayScale College Salary Report 2019*

## GET READY FOR YOUR FUTURE

The top three attributes employers are seeking from recent graduates are\*:

1. Communication skills (written)
2. Problem-solving skills
3. Ability to work in a team

Gain these soft skills in all 170 majors, including public health, business and computer science.

## INTERNSHIPS DRIVEN BY INDUSTRY

OSU offers several support services to find internship placements, including MECOP which is unique to Oregon. With over 130 different companies participating in the program, MECOP places students in paid internships in the fields of engineering, tech and business with top companies like Boeing, Intel, HP and Oracle.

## JOBS ON CAMPUS

There are many opportunities for OSU students, with a minimum of 5,000 jobs available daily on the career center portal. International students are eligible to work on campus for up to 20 hours a week, earning an estimated \$8,100 to help offset your educational costs.

\*National Association of Colleges and Employers 2019

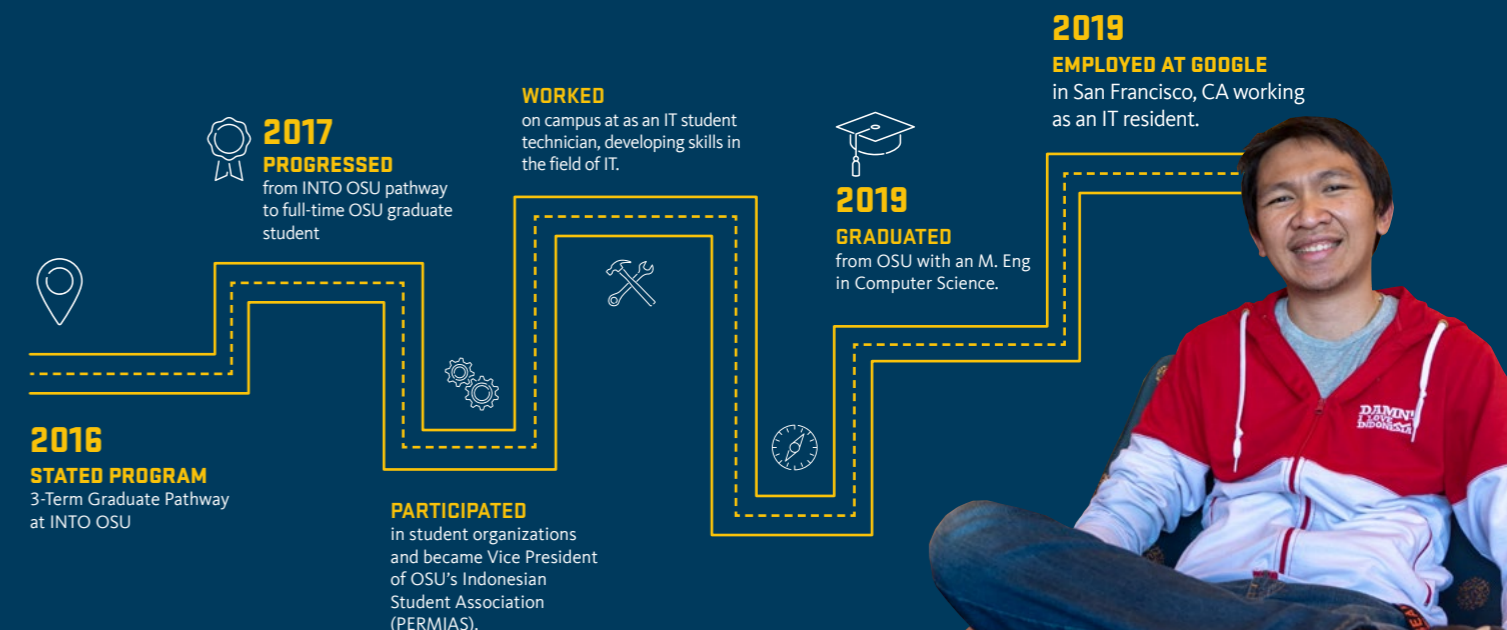


# STUDENT JOURNEY

Aldi, Indonesia | Class of 2019

MEng in Computer Science | IT Resident at Google

"When I was at Oregon State University, I was working at the service desk doing IT support. My goal is to get an IT job in Silicon Valley. So, I worked on building my skill, building my management skill and building my leadership skill. Eventually, IT Support led me into the job I'm working right now as an IT resident at Google, which is a similar position."



# ACADEMIC PROGRAMS

**FIND YOUR DEGREE.** With a wide range of subject areas and admissions options, you can find the perfect degree for your chosen career. You can choose to apply for direct entry to the university or for a Pathway program that provides extra academic, language and cultural support. From the day you apply to the day you graduate, we are here to help you succeed every step of the way. Flip to the back cover to learn how to apply.

**B = Bachelor's**    **M = Master's**    **D = Doctorate**    ■ Indicates degree programs also available at OSU-Cascades    ● Indicates an OSU degree program is available

**GP** Indicates a Graduate Pathway program can lead to this degree. This degree is available through direct admission.    ▶ Designated STEM degree by the U.S. Department of Homeland Security

**MID** Master's International Direct provides customized support to direct entry students.

## International Year One

Indicates the undergraduate Pathway program that should be taken to progress to an undergraduate academic program. This program is also available through direct admission.

<b>AP All Undergraduate Pathways</b>	<b>EN Engineering</b>	<b>FO Forestry</b>	<b>PP Public Policy</b>
<b>BU Business</b>	<b>ES Exercise and Sport Science</b>	<b>GE General</b>	<b>PS Psychology</b>
<b>CS Computer Science</b>	<b>EV Environmental Economics and Policy</b>	<b>MA Mathematics</b>	<b>SC Science</b>
<b>DA Design, Apparel and Merchandising Management</b>	<b>FS Food Science and Technology</b>	<b>NR Natural Resources and Renewable Materials</b>	<b>WG Women and Gender Studies</b>

## Direct Routes

### INTERNATIONAL DIRECT

All direct undergraduate degrees have customized support and enhanced student experience for first-year success.  
→ For more information see pages 12-15

### MASTER'S INTERNATIONAL DIRECT

Programs with the MID route have enhanced first-term support.  
→ For full listings and more information, see page 17

	B	M	D
<b>College of Agricultural Sciences</b>			
Agricultural and Food Business Management	SC		
Agricultural Education		●	
Agricultural Sciences	SC		
▶ Animal Science(s) [BS options: Animal Behavior, Animal BioHealth/Pre-Professional, Animal Production, Equine, Rangeland Science]	SC	●	●
<b>Applied Economics</b>		GP	●
Biological Data Sciences [BS options: Computational Biology; Ecological and Environmental Informatics; Genomics]	SC		
▶ Bioresource Research [BS options: Animal Reproduction and Development; Applied Genetics; Bioproducts and Bioenergy; Biotechnology; Climate and Biosystems Modeling; Environmental Chemistry; Food Quality; Genomics/Bioinformatics; Pest Biology and Management; Plant Growth and Development; Sustainable Ecosystems; Toxicology; Water Resources]	SC		
▶ Botany [BS options: Comprehensive Botany; Customizable; Ecology, Evolution, and Conservation; Molecular, Cellular, and Genomic Botany; Plant Pathology]	SC		
▶ Botany and Plant Pathology		●	●
▶ Crop and Soil Science [BS Options: Agronomy; Plant Breeding and Genetics; Soil Science]	SC		
▶ Crop Science [MS, PhD options: Entomology; Plant Breeding and Genetics]		●	●
Environmental Economics and Policy	EV		
Fisheries and Wildlife Administration		●	
▶ Fisheries and Wildlife Sciences	SC		
Fisheries Sciences		●	●
▶ Food Science and Technology [BS options: Enology and Viticulture; Fermentation Science; Food Science]	FS	●	●
▶ Horticulture [BS options: Ecological Management of Turf, Landscape and Urban Horticulture; General Horticulture; Horticultural Research; Plant Breeding and Genetics; Sustainable Horticultural Production; Therapeutic Horticulture; Viticulture and Enology] [MS, PhD options: Entomology; Plant Breeding and Genetics]	NR	●	●
▶ Rangeland Ecology and Management		●	●
▶ Rangeland Sciences [BS options: Habitat Management; Pastoral Systems of the World; Sustainable Livestock Ranching; Sustainable Rangeland Ecosystem Stewardship]	NR		
▶ Soil Science		●	●
▶ Sustainability	SC		
▶ Toxicology		●	●
▶ Wildlife Science		●	●

	B	M	D
<b>College of Business</b>			
Accountancy [BS options: Information Security, Assurance and Analytics; International Business]	BU	●	
Apparel Design	DA		
▶ <b>Business</b> [MSB options: Finance; Financial Analytics; Marketing Insights and Analytics; Supply Chain Analytics]		GP	MID
<b>Business Administration/MBA</b> [BA, BS options: Digital Marketing; Family Business; General Business (also at OSU-Cascades); Hospitality Management (also at OSU-Cascades); Innovation and Entrepreneurship; International Business (also at OSU-Cascades); Marketing; Merchandising Management; Retail Management; Supply Chain and Logistics Management] [MBA, PhD options: Accounting (PhD only); Business Analytics; Corporate Finance; Human Resource Management; Marketing; Research Thesis; Strategy, Entrepreneurship, and Innovation (PhD only); Supply Chain and Logistics Management]	BU	GP	●
Business Analytics [BS options: Digital Marketing Analytics; Human Resource Analytics; Market Research; Consumer Analytics]		●	
Business Information Systems [BA, BS option: International Business]	BU		
Design and Innovation Management Major	DA		
Finance [BA, BS option: International Business]	BU		
Hospitality Management (OSU-Cascades Only)	BU		
Innovation Management	BU		
Interior Design	DA		
Management [BA, BS option: International Business]	BU		
Marketing [BA, BS option: International Business]	BU		
Merchandising Management		●	
Supply Chain and Logistics Management		●	
<b>College of Earth, Ocean and Atmospheric Sciences</b>			
▶ Earth Sciences [BS options: Climate Science, Geology, Ocean Science]	SC		
▶ Environmental Sciences [BS options: Alternative Energy; Applied Ecology; Aquatic Biology; Chemistry and the Environment; Conservation, Resources, and Sustainability; Earth Systems; Environmental Agriculture; Environmental Policy and Economics; Environmental Water Resources]	SC		
▶ Geography		●	●
Geography and Geospatial Science	SC		
Geology		●	●
▶ Marine Resource Management		●	
▶ Ocean, Earth and Atmospheric Sciences		●	●
<b>College of Education</b>			
Adult and Higher Education [EdD, PhD options: Community College Leadership; Leadership in Higher Education]			●
Counseling [MCoun options: Clinical Mental Health Counseling (OSU-Cascades only); School Counseling (OSU-Cascades only)]		●	●
Education [BA, BS options: Advanced Mathematics Teaching; Biology Teaching; Chemistry Teaching; Elementary Teaching; Family and Consumer Sciences Teaching; Foundational Mathematics; Health Teaching; Integrated Science Teaching; Language Arts Teaching; Physics Teaching; Social Studies Teaching] [PhD options: Agricultural Education; Language Equity and Education Policy; Science/Mathematics Education]	GE		●
Teaching (OSU-Cascades Only) [BS options: Elementary Education]	GE		
Teaching (MAT) [MAT options: Elementary (OSU-Cascades only); Language Arts (OSU-Cascades only); Mathematics (OSU-Cascades only); Music; Science (OSU-Cascades only); Social Studies (OSU-Cascades only)]		●	
<b>College of Engineering</b>			
▶ Architectural Engineering	EN		
▶ Artificial Intelligence		●	●
▶ <b>Bioengineering</b>	EN	GP	MID

	B	M	D
▶ Biological and Ecological Engineering		●	●
▶ <b>Chemical Engineering</b>	EN	GP	MID
▶ <b>Civil Engineering</b>	EN	GP	MID
▶ <b>Computer Science</b> [BA, BS options: Applied Computer Science; Computer Systems] [BS options: Artificial Intelligence, Bioinformatics, Business and Entrepreneurship, Computer Systems, Cybersecurity, Data Science, Human-Computer Interaction, Robot Intelligence, Simulation and Game Programming, Web and Mobile Application Development]	CS	GP	MID
▶ Construction and Engineering Management	EN		
▶ Ecological Engineering	EN		
▶ <b>Electrical and Computer Engineering</b>	EN	GP	MID
▶ Energy Systems Engineering (OSU-Cascades Only)	EN		
▶ Engineering Science (OSU-Cascades Only) [BS Option: Energy Systems Engineering]	EN		
▶ <b>Environmental Engineering</b>	EN	GP	MID
▶ <b>Industrial Engineering</b> [BS options: Business Engineering] [Graduate options: Advanced Manufacturing, Engineering Management, Human Systems Engineering, Informational Systems Engineering, Manufacturing Systems Engineering]	EN	GP	MID
▶ Manufacturing Engineering [BS options: Manufacturing Systems; Product Development]	EN		
▶ Materials Science		●	●
▶ <b>Mechanical Engineering</b> [Grad options: Advanced Manufacturing; Design; Dynamics and Controls; Engineering Management; Materials Mechanics; Renewable Energy; Robotics and Thermal Fluid Sciences]	EN	GP	
▶ Medical Physics		●	●
▶ Nuclear Engineering	EN	●	●
Outdoor Products (OSU-Cascades Only)	BU		
▶ Radiation Health Physics [BS option: Radiation Health Physics Pre-Med]	SC	●	●
▶ Robotics		●	●
<b>College of Forestry</b>			
▶ Forest Ecosystem and Society		●	●
▶ Forest Engineering	FO		
▶ Forest Engineering/Civil Engineering	EN		
▶ Forestry [BS options: Conservation Law Enforcement, Forest Management, Forest Operations Management, Forest Restoration and Fire]	FO		
Marine Studies		●	
Natural Resources [BS options: Ecological Restoration; Fish and Wildlife Conservation; Forest Ecosystems; Human Dimensions in Natural Resources; Individual Specialty; Intergrated Conservation Analyst; Landscape Analysis; Natural Resource Education; Policy and Management; Urban Forest Landscapes; Wildland Fire Ecology]	NR		
International Studies		●	
▶ Renewable Materials [BS options: Advanced Wood Manufacturing; Art and Design; Management and Marketing; Science and Engineering]	NR		
▶ Tourism, Recreation, and Adventure Leadership [BS options: Adventure Leadership Education (OSU-Cascades only); Nature, Eco, and Adventure Tourism (OSU-Cascades only); Outdoor Recreation Management (OSU-Corvallis only); Sustainable Tourism Management (OSU-Corvallis only)]	FO		
Sustainable Forest Management [MS/PhD Options: Forest Operations Planning and Management; Forest Policy Analysis and Economics; Forest Biometrics and Geomatics; Silviculture, Fire and Forest Health; Forest Soil and Watershed Processes; Engineering for Sustainable Forestry] [MF Options: Forest Business for Private Landowners; Spatial Science and Analysis; Silviculture, Fire and Forest Health]		●	●
▶ Wood Science		●	●
<b>College of Liberal Arts</b>			
American Studies (OSU-Cascades Only) [BA, BS options: American Cultures and Identities; Culture and Natural Environments; General American Studies; Pre-Law Studies]	GE		
Anthropology [BA, BS options: Archaeology, Biocultural, Cultural/Linguistics, General Anthropology]	GE		
Applied Anthropology		●	●
Applied Ethics		●	
Art [BA, BS, BFA options: Art History (BA, BS only); Photography and Digital Studio (BA, BS, BFA); Studio Art (BA, BS, BFA)]	GE		
Arts, Media and Technology (OSU-Cascades Only)	GE		
College Student Services Administration		●	
Creative Writing	GE	●	
▶ Digital Communication Arts	GE		
Economics [BA,BS Options: General Economics; Law, Economics and Policy; Managerial Economics; Mathematical Economics]	GE		
English	GE	●	
Environmental Arts and Humanities		●	
Ethnic Studies	GE		
French	GE		
German	GE		
Graphic Design	GE		
History [MA, MS options: Community History and Civic Engagement; Global Perspectives on War, Peace, and Empire; History of Science and Technology]	GE	●	

	B	M	D
History and Philosophy of Science		●	●
International Studies		●	
Liberal Studies [BA, BS option: Pre-Education]	GE		
Marine Studies		●	
Music [BA, BS option: Music Production]		●	
Music Studies [BM options: Instrumental Performance; Music Education; Piano Performance; Piano Performance and Pedagogy; Vocal Performance, Pedagogy, and Literature]	GE		
▶ Philosophy	GE		
Political Science [BA, BS options: Environmental and Energy Politics; International Affairs; Law and Politics]	GE		
Psychology (MS and PhD only available at Corvallis)	PS	●	●
Public Policy	PP	●	●
Religious Studies	GE		
Social Science [BA, BS option: Community Development and Leadership] (OSU-Cascades Only) [BA, BS options: Community Development and Leadership; Cultures and Identities; General Social Science; Humans and the Environment; Law and Society]	GE		
Sociology [BA, BS options: Crime and Justice; Environmental and Natural Resource Sociology]	PP		
Spanish	GE		
Speech Communication [BA, BS options: Communication, Theater Arts]	GE		
Women, Gender and Sexuality Studies	WG	●	●
<b>College of Pharmacy</b>			
▶ Pharmaceutical Sciences		●	●
Pharmacy, Doctor of Pharmacy (4-year professional program)			●
<b>College of Public Health and Human Sciences</b>			
Adapted Physical Education		●	
Athletic Training		●	
Human Development and Family Sciences [BS options: Child Development; Early Childhood (OSU-Cascades only); General Human Development and Family Sciences; Human Services (also at OSU-Cascades)]	ES	●	●
Kinesiology [BS options: Therapy and Allied Health (also at OSU-Cascades)] [MS, PhD option: Adapted Physical Activity]	ES	●	●
Nutrition [BS options: Dietetics; Nutrition in Foodservice, Culinary and Food Systems; Nutrition and Health Sciences; Pre-Dietetics]	ES	●	●
<b>Public Health</b> [BS options: Health Management and Policy; Health Promotion and Health Behavior] [MPH, PhD options: <b>Biostatistics</b> ; <b>Environmental and Occupational Health</b> ; <b>Epidemiology</b> ; <b>Global Health</b> ; <b>Health Promotion and Health Behavior</b> ; Health Systems and Policy; Physical Activity; Public Health Practice]	ES	GP	●
Physical Therapy (DPT) [professional program; OSU-Cascades only]			●
<b>College of Science</b>			
▶ Biochemistry and Biophysics [BS options: Advanced Biophysics; Neuroscience; Pre-Medicine/Biochemistry and Biophysics]	SC	●	●
▶ Biochemistry and Molecular Biology [BS options: Advanced Molecular Biology, Computational Molecular Biology, Pre-Medicine/Biochemistry and Molecular Biology]	SC		
BioHealth Sciences [BS options: Pre-Clinical Laboratory Science, Pre-Dentistry, Pre-Medicine/Pre-Podiatry, Pre-Optometry, Pre-Pharmacy, Pre-Physical Therapy, Pre-Physician Assistant]	SC		
▶ Biology [BS options: Ecology, Genetics, Marine Biology, Physiology and Behavior, Pre-Dentistry Biology, Pre-Education Biology, Pre-Medicine Biology, Pre-Veterinary Medicine]	SC		
▶ <b>Chemistry</b> [BA, BS options: Advanced Biochemistry, Advanced Chemistry, Biochemistry, Business, Chemical Engineering, Chemistry Education, Environmental Chemistry, Forensic Science, Materials Science, Pre-Medicine] [MA, MS options: Analytical Chemistry, Inorganic Chemistry, <b>Materials Chemistry</b> , Nuclear Chemistry, Organic Chemistry, Physical Chemistry]	SC	GP	●
▶ Data Analytics		●	
▶ Integrative Biology		●	●
▶ <b>Mathematics</b> [BS options: Applied and Computational Mathematics, Mathematical Biology, Secondary Teaching Emphasis, Statistics]	MA	GP	●
▶ Microbiology [BS options: Aquatic Microbiology, Pre-Medicine/Microbiology]	SC	●	●
▶ Physics/Applied Physics [BA, BS options: Applied Physics, Biological Physics, Chemical Physics, Computational Physics, Geophysics, Mathematical Physics, Optical Physics, Physics Teaching/Physics]	SC	●	●
▶ Statistics		●	●
▶ Zoology	SC		
<b>Carlson College of Veterinary Medicine</b>			
Veterinary Medicine - DVM			●
<b>Graduate School Interdisciplinary Programs</b>			
<b>Comparative Health Sciences</b> [MS, PhD options: Biomedical Sciences, Clinical Sciences]		GP	GP
▶ <b>Environmental Sciences</b> [MA, MS, PSM, PhD]		GP	MID
Interdisciplinary Studies		●	
▶ Water Resources Engineering		●	●
▶ Water Resources Policy and Management		●	
▶ Water Resources Science		●	●

# UNDERGRADUATE ADMISSIONS

We offer several routes to admission. With more than 200 bachelor's degrees, flexible study plans and start dates throughout the year, we will help you find the option that is right for you.

There is no need to stress about where you start; just focus on where you're going. We don't design our programs for one type of student; our programs are built for everyone. Where you begin depends on your grades and English level. Where you end up is where you want to be: graduating with a bachelor's degree from Oregon State University.

→ **International Direct (ID):** International Direct is designed to give international students who are independent and fully qualified comprehensive support during their first year on campus. International Direct students are issued a direct I-20, and receive other support services once in the US including: individualized advising and guided registration, personalized study plan, term-long orientation and academic support resources. For more information, visit [admissions.oregonstate.edu/international/programs/undergraduate-degree-programs/first-year-freshman](https://admissions.oregonstate.edu/international/programs/undergraduate-degree-programs/first-year-freshman)

→ **International Year One (IYO):** International Year One allows you to begin earning credits toward your degree even if you do not meet the academic and English requirements for International Direct. You will receive additional academic, English language and cultural support to help you successfully complete your first year and graduate in the same amount of time as International Direct students. For more information, visit [www.intostudy.com/osu/programs](https://www.intostudy.com/osu/programs)

→ **Academic English Language Program:** If you do not meet the International Direct or International Year One entry language requirements, you can enter our Academic English program to improve your academic and language skills. Once you have achieved the required language level, you can progress to International Year One or enter your degree program directly. Learn more on page 18.

Entry Requirements			
ENTRY ROUTE	ID	IYO	
		3-TERM	4-TERM
Requirements*	High school diploma	High school diploma	
Minimum GPA Equivalent	3.0	2.5	2.5
TOEFL iBT	70	60	50
IELTS	6.0	5.5	5.0
IELA	169	162	154
Duolingo	N/A	90	75
Academic English	Level 5	Level 4	Level 3

Entry requirements are subject to change and may vary by program. \*No SAT required for admissions.

Institutional Code TOEFL: 4586

Dates		
ENTRY ROUTE	ID AND IYO	
Start Dates	Fall 2022: Sep 14, 2022 Winter 2023: Jan 3, 2023	Spring 2023: Mar 28, 2023 Summer 2023: Jun 20, 2023

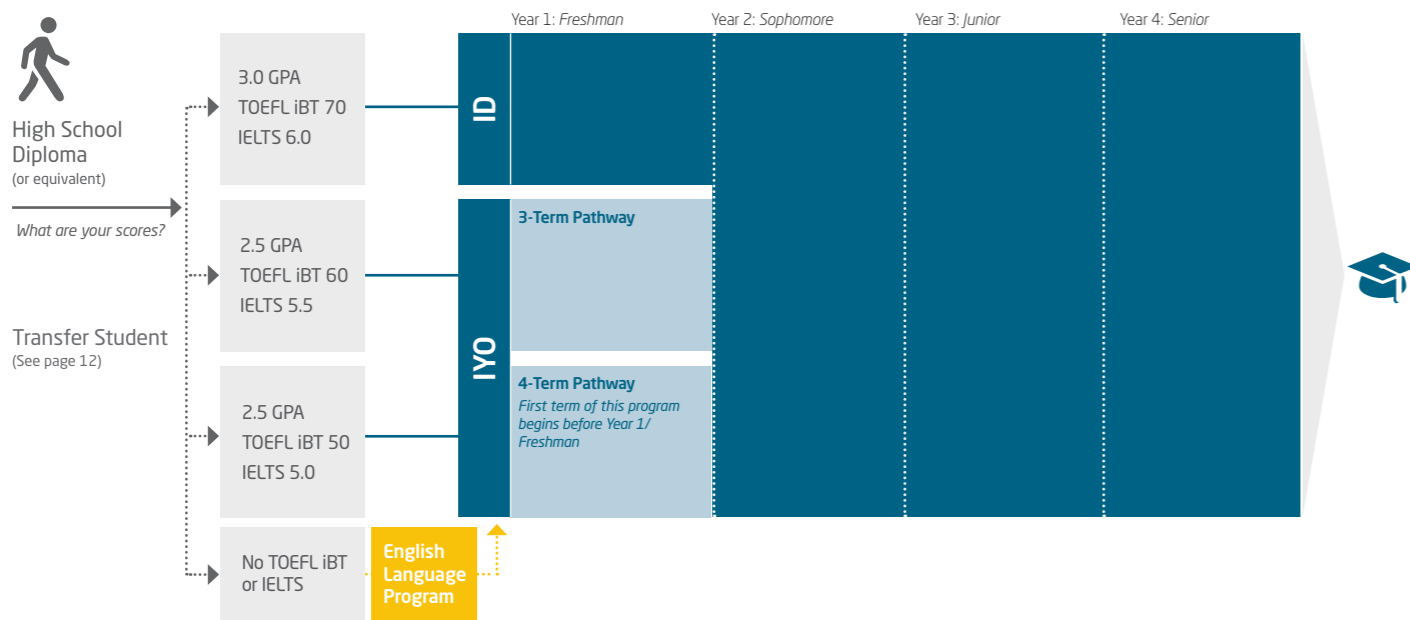
High performing students with GPAs over 3.75 are invited to join the Honors College. Graduates from the Honors College will earn OSU's most prestigious Undergraduate Degree, the Honors Baccalaureate degree. For more information, visit: <https://honors.oregonstate.edu>

**The Honors College (HC)** is a small degree-granting college at Oregon State University. There are approximately 1,600 students enrolled working toward an Honors Baccalaureate degree in their academic major. The HC offers small classes, a residence hall option, student learning centers and personal advising with the research and involvement opportunities of OSU.



FOR MORE INFORMATION ABOUT OSU UNDERGRADUATE PROGRAMS, SCAN TO VISIT OUR WEBSITE.

## Undergraduate Degree Program



## International Year One Programs

\*Estimated credits remaining after Pathway/Total credit hours needed to complete degree.

Term	Start Dates				Credits*	Entry Requirements: High School Diploma					Progression Requirements	
	Fall	Winter	Spring	Summer		GPA	TOEFL iBT	IELTS	IELA	Duolingo	GPA	Other
<b>Business</b>												
4-Term	•	•	•	•	125/180	2.5	50	5.0	154	75	2.25	<ul style="list-style-type: none"> <li>Grade of C- or better in Math (MTH 111 or higher), English Composition (WR 121) and Communication (COMM 111)</li> <li>No Satisfactory/Unsatisfactory (S/U) graded courses in OSU academic coursework</li> <li>Minimum number of required credits completed: 3-4-term/36 cr</li> </ul>
3-Term	•	•	•	•	132/180		60	5.5	162	90		
<b>Computer Science</b>												
4-Term	•	•	•	•	127/180	2.5	50	5.0	154	75	2.25	<ul style="list-style-type: none"> <li>Grade of C- or better in Math (MTH 111 or higher), English Composition (WR 121) and Communication (COMM 111)</li> <li>No Satisfactory/Unsatisfactory (S/U) graded courses in OSU academic coursework</li> <li>Minimum number of required credits completed: 3-4-term/36 cr</li> </ul>
3-Term	•	•	•	•	135/180		60	5.5	162	90		
<b>Design, Apparel and Merchandising Management</b>												
4-Term	•	•	•	•	128/180	2.5	50	5.0	154	75	2.25	<ul style="list-style-type: none"> <li>Grade of C- or better in Math (MTH 111 or higher), English Composition (WR 121) and Communication (COMM 111)</li> <li>No Satisfactory/Unsatisfactory (S/U) graded courses in OSU academic coursework</li> <li>Minimum number of required credits completed: 3-4-term/36 cr</li> </ul>
3-Term	•	•	•	•	134/180		60	5.5	162	90		
<b>Engineering</b>												
4-Term	•	•	•	•	123/180	2.5	50	5.0	154	75	2.25	<ul style="list-style-type: none"> <li>Grade of C- or better in Math (MTH 111 or higher), English Composition (WR 121) and Communication (COMM 111)</li> <li>No Satisfactory/Unsatisfactory (S/U) graded courses in OSU academic coursework</li> <li>Minimum number of required credits completed: 3-4-term/36 cr</li> </ul>
3-Term	•	•	•	•	133/180		60	5.5	162	90		
<b>Environmental Economics and Policy</b>												
4-Term	•	•	•	•	125/180	2.5	50	5.0	154	75	2.25	<ul style="list-style-type: none"> <li>Grade of C- or better in Math (MTH 111 or higher), English Composition (WR 121) and Communication (COMM 111)</li> <li>No Satisfactory/Unsatisfactory (S/U) graded courses in OSU academic coursework</li> <li>Minimum number of required credits completed: 3-4-term/36 cr</li> </ul>
3-Term	•	•	•	•	134/180		60	5.5	162	90		
<b>Exercise and Sport Science</b>												
4-Term	•	•	•	•	124/180	2.5	50	5.0	154	75	2.25	<ul style="list-style-type: none"> <li>Grade of C- or better in Math (MTH 111 or higher), English Composition (WR 121) and Communication (COMM 111)</li> <li>No Satisfactory/Unsatisfactory (S/U) graded courses in OSU academic coursework</li> <li>Minimum number of required credits completed: 3-4-term/36 cr</li> </ul>
3-Term	•	•	•	•	132/180		60	5.5	162	90		
<b>Food Science and Technology</b>												
4-Term	•	•	•	•	125/180	2.5	50	5.0	154	75	2.25	<ul style="list-style-type: none"> <li>Grade of C- or better in Math (MTH 111 or higher), English Composition (WR 121) and Communication (COMM 111)</li> <li>No Satisfactory/Unsatisfactory (S/U) graded courses in OSU academic coursework</li> <li>Minimum number of required credits completed: 36</li> </ul>
3-Term	•	•	•	•	135/180		60	5.5	162	90		
<b>Forestry</b>												
4-Term	•	•	•	•	127/180	2.5	50	5.0	154	75	2.25	<ul style="list-style-type: none"> <li>Grade of C- or better in Math (MTH 111 or higher), English Composition (WR 121) and Communication (COMM 111)</li> <li>No Satisfactory/Unsatisfactory (S/U) graded courses in OSU academic coursework</li> <li>Minimum number of required credits completed: 36</li> </ul>
3-Term	•	•	•	•	135/180		60	5.5	162	90		
<b>General</b>												
4-Term	•	•	•	•	132/180	2.5	50	5.0	154	75	2.25	<ul style="list-style-type: none"> <li>Grade of C- or better in Math (MTH 111 or higher), English Composition (WR 121) and Communication (COMM 111)</li> <li>No Satisfactory/Unsatisfactory (S/U) graded courses in OSU academic coursework</li> <li>Minimum number of required credits completed: 36</li> </ul>
3-Term	•	•	•	•	138/180		60	5.5	162	90		
<b>Mathematics</b>												
4-Term	•	•	•	•	127/180	2.5	50	5.0	154	75	2.25	<ul style="list-style-type: none"> <li>Grade of C- or better in Math (MTH 111 or higher), English Composition (WR 121) and Communication (COMM 111)</li> <li>No Satisfactory/Unsatisfactory (S/U) graded courses in OSU academic coursework</li> <li>Minimum number of required credits completed: 36</li> </ul>
3-Term	•	•	•	•	135/180		60	5.5	162	90		
<b>Natural Resources and Renewable Materials</b>												
4-Term	•	•	•	•	127/180	2.5	50	5.0	154	75	2.25	<ul style="list-style-type: none"> <li>Grade of C- or better in Math (MTH 111 or higher), English Composition (WR 121) and Communication (COMM 111)</li> <li>No Satisfactory/Unsatisfactory (S/U) graded courses in OSU academic coursework</li> <li>Minimum number of required credits completed: 36</li> </ul>
3-Term	•	•	•	•	138/180		60	5.5	162	90		
<b>Psychology</b>												
4-Term	•	•	•	•	129/180	2.5	50	5.0	154	75	2.25	<ul style="list-style-type: none"> <li>Grade of C- or better in Math (MTH 111 or higher), English Composition (WR 121) and Communication (COMM 111)</li> <li>No Satisfactory/Unsatisfactory (S/U) graded courses in OSU academic coursework</li> <li>Minimum number of required credits completed: 36</li> </ul>
3-Term	•	•	•	•	135/180		60	5.5	162	90		
<b>Public Policy</b>												
4-Term	•	•	•	•	128/180	2.5	50	5.0	154	75	2.25	<ul style="list-style-type: none"> <li>Grade of C- or better in Math (MTH 111 or higher), English Composition (WR 121) and Communication (COMM 111)</li> <li>No Satisfactory/Unsatisfactory (S/U) graded courses in OSU academic coursework</li> <li>Minimum number of required credits completed: 36</li> </ul>
3-Term	•	•	•	•	137/180		60	5.5	162	90		
<b>Science</b>												
4-Term	•	•	•	•	125/180	2.5	50	5.0	154	75	2.25	<ul style="list-style-type: none"> <li>Grade of C- or better in Math (MTH 111 or higher), English Composition (WR 121) and Communication (COMM 111)</li> <li>No Satisfactory/Unsatisfactory (S/U) graded courses in OSU academic coursework</li> <li>Minimum number of required credits completed: 36</li> </ul>
3-Term	•	•	•	•	133/180		60	5.5	162	90		
<b>Women and Gender Studies</b>												
4-Term	•	•	•	•	131/180	2.5	50	5.0	154	75	2.25	<ul style="list-style-type: none"> <li>Grade of C- or better in Math (MTH 111 or higher), English Composition (WR 121) and Communication (COMM 111)</li> <li>No Satisfactory/Unsatisfactory (S/U) graded courses in OSU academic coursework</li> <li>Minimum number of required credits completed: 36</li> </ul>
3-Term	•	•	•	•	139/180		60	5.5	162	90		

Entry and progression requirements are subject to change and may vary by program.

## [SAMPLE IYO PROGRAM] Computer Science

3-Term Pathway	Degree Program Components	Program Information														
Fall: September 14, 2022 Winter: January 3, 2023 Spring: March 28, 2023 Summer: June 20, 2023	180 credit hour program 45 credit hours from Pathway apply to degree 135 credit hours remaining toward degree															
<b>Entry Requirements</b>	<b>Term 1</b>	<b>Progression Requirements</b>														
<ul style="list-style-type: none"> <li>High school diploma with 2.5 GPA</li> </ul>	<table border="1"> <thead> <tr> <th>Course Title</th> <th>Credit Hours</th> </tr> </thead> <tbody> <tr> <td>ALS 150 Academic Reading/Writing</td> <td>3</td> </tr> <tr> <td>ALS 151 Academic Listening/Speaking</td> <td>3</td> </tr> <tr> <td>MTH Math Course - Variable Level</td> <td>4</td> </tr> <tr> <td>ENGR 100 The Oregon State Engineering Student</td> <td>3</td> </tr> <tr> <td>GEOG 106 Western Tradition and Emerging Challenges in the Global North</td> <td>3</td> </tr> <tr> <td><b>Total</b></td> <td><b>16</b></td> </tr> </tbody> </table>	Course Title	Credit Hours	ALS 150 Academic Reading/Writing	3	ALS 151 Academic Listening/Speaking	3	MTH Math Course - Variable Level	4	ENGR 100 The Oregon State Engineering Student	3	GEOG 106 Western Tradition and Emerging Challenges in the Global North	3	<b>Total</b>	<b>16</b>	<ul style="list-style-type: none"> <li>2.25 GPA cumulative in the Pathway program</li> <li>No Satisfactory/Unsatisfactory (S/U) graded courses in OSU academic coursework</li> <li>Grade of C- or better in English Composition (WR 121), Math (MTH 111 or higher) and Communication (COMM 111)</li> <li>Minimum number of credits earned during Pathway program</li> </ul>
Course Title	Credit Hours															
ALS 150 Academic Reading/Writing	3															
ALS 151 Academic Listening/Speaking	3															
MTH Math Course - Variable Level	4															
ENGR 100 The Oregon State Engineering Student	3															
GEOG 106 Western Tradition and Emerging Challenges in the Global North	3															
<b>Total</b>	<b>16</b>															
<b>Language Requirements</b>	<b>Term 2</b>	<b>Notes</b>														
<ul style="list-style-type: none"> <li>TOEFL iBT 60 or</li> <li>IELTS 5.5 or</li> <li>IELA 162 or</li> <li>Duolingo 90</li> </ul>	<table border="1"> <thead> <tr> <th>Course Title</th> <th>Credit Hours</th> </tr> </thead> <tbody> <tr> <td>ALS 162 Advanced Academic Writing/INT'L</td> <td>3</td> </tr> <tr> <td>COMM 111 Public Speaking</td> <td>3</td> </tr> <tr> <td>MTH Math Course - Variable Level</td> <td>4</td> </tr> <tr> <td>ENGR 102 Design Engineering and Problem Solving</td> <td>4</td> </tr> <tr> <td>PAC Physical Activity Class</td> <td>1</td> </tr> <tr> <td><b>Total</b></td> <td><b>15</b></td> </tr> </tbody> </table>	Course Title	Credit Hours	ALS 162 Advanced Academic Writing/INT'L	3	COMM 111 Public Speaking	3	MTH Math Course - Variable Level	4	ENGR 102 Design Engineering and Problem Solving	4	PAC Physical Activity Class	1	<b>Total</b>	<b>15</b>	<p>All International Year One programs have an advanced version with fewer language and study skills classes for students with higher levels of English on entry. MTH: Math Course - Variable Level: Specific course is determined by results of Math placement test and requirements for the major field of study. COMM 111 Public Speaking: COMM 111 is delivered through the Department of Communication but are INTO OSU student-only sections.</p>
Course Title	Credit Hours															
ALS 162 Advanced Academic Writing/INT'L	3															
COMM 111 Public Speaking	3															
MTH Math Course - Variable Level	4															
ENGR 102 Design Engineering and Problem Solving	4															
PAC Physical Activity Class	1															
<b>Total</b>	<b>15</b>															
	<b>Term 3</b>	<b>Term 4 (Recommended)</b>														
	<table border="1"> <thead> <tr> <th>Course Title</th> <th>Credit Hours</th> </tr> </thead> <tbody> <tr> <td>WR 121 English Composition</td> <td>4</td> </tr> <tr> <td>MTH Math Course - Variable Level</td> <td>4</td> </tr> <tr> <td>ENGR 103 Engineering Computation and Algorithmic Thinking</td> <td>4</td> </tr> <tr> <td>HHS 231 Lifetime Fitness for Health</td> <td>2</td> </tr> <tr> <td>ALS 181 Lifetime Fitness for Health ESL Bridge</td> <td>2</td> </tr> <tr> <td><b>Total</b></td> <td><b>16</b></td> </tr> </tbody> </table>	Course Title	Credit Hours	WR 121 English Composition	4	MTH Math Course - Variable Level	4	ENGR 103 Engineering Computation and Algorithmic Thinking	4	HHS 231 Lifetime Fitness for Health	2	ALS 181 Lifetime Fitness for Health ESL Bridge	2	<b>Total</b>	<b>16</b>	<p>During the fourth term students will complete the additional classes to ensure that they are well-prepared for their second year at OSU. It is recommended that all students, especially those in sciences and engineering, plan to study for four consecutive terms.</p> <p><b>These courses are generally delivered through the INTO OSU Center and are for Pathway students only.</b></p>
Course Title	Credit Hours															
WR 121 English Composition	4															
MTH Math Course - Variable Level	4															
ENGR 103 Engineering Computation and Algorithmic Thinking	4															
HHS 231 Lifetime Fitness for Health	2															
ALS 181 Lifetime Fitness for Health ESL Bridge	2															
<b>Total</b>	<b>16</b>															
	<b>Term 4 (Recommended)</b>															

[eeccs.oregonstate.edu](https://eeccs.oregonstate.edu)



## UNDERGRADUATE TRANSFER >>

Have you earned credits from another college or university and want to transfer to a US university? You can transfer directly into Oregon State University or choose our Undergraduate Transfer Program (UTP), which is specifically designed to support international students through the process of transferring.

Entry Requirements		
PROGRAM	DIRECT TRANSFER	UNDERGRADUATE TRANSFER PROGRAM
Program Length	N/A	1-Term, 2-Term, 3-Term or 4-Term
Start Dates	Fall 2022: Sep 2022 Winter 2023: Jan 2023 Spring 2023: Mar 2023 Summer 2023: Jun 2023	Fall 2022: Sep 14, 2022 Winter 2023: Jan 3, 2023 Spring 2023: Mar 28, 2023 Summer 2023: Jun 20, 2023
GPA	2.25-2.49 college/university GPA (College Math course completed with C-)  2.50+ college/university GPA (College Math course not required)  If transferring from a US-accredited college/university, Writing 121 OSU course equivalent completed with C- or better. If transferring from a non-US-accredited college or university, then no Writing 121 OSU course equivalent is required.	2.25
TOEFL iBT	80 (minimum 16 subscores)	50-75
IELTS	6.5	5.0-6.0
IELA	176	154-169
Other	<ul style="list-style-type: none"> <li>Two English composition courses from a recognized college or university in the US with grades C- or better</li> <li>One English composition and one speech communication course with grades C- or better</li> <li>Level 6 Academic English completion with C/Pass or higher in all classes</li> </ul>	N/A
Duolingo	N/A	75-110
Minimum Transfer Credits	24 per quarter (16 per semester) credits	15 per quarter (12 per semester) credits from a recognized college or university
Maximum Transfer Credits	No limit	No limit

Entry requirements are subject to change and may vary by program.

### Why Choose UTP?

Choosing UTP provides a customized path to your bachelor's degree. Before your program starts, Oregon State University will provide you with an estimate of credits that will transfer to the university. Once you arrive on campus, our friendly staff will be available to help you transition into life at a US university. You will also have access to helpful resources, including academic, English language and cultural support. If you do not meet the English language entry requirements for the UTP, you can enter our Academic English program before progressing to either the UTP or direct transfer to Oregon State University.

### UTP Benefits:

- Transfer of credits from your college or university-level classes
- Receive customized curriculum of university credit-bearing courses
- Quick turnaround time for offer (5-7 business days)
- Unofficial Pre-arrival Credit Evaluation (15 additional business days after receiving offer letter)
- Guaranteed progression to any undergraduate program upon successful completion of your UTP
- Academic advising throughout the program, including progression and student success advisors

Start Dates	Start Dates			
	Fall 2022: Sep 14, 2022	Winter 2023: Jan 3, 2023	Spring 2023: Mar 28, 2023	Summer 2023: Jun 20, 2023
Business	●●	●●	●●	●●
Computer Science	●●	●●	●●	●●
Design, Apparel and Merchandising Management	●●	●●	●●	●●
Engineering	●●	●●	●●	●●
Environmental Economics and Policy	●●	●●	●●	●●
Exercise and Sport Science	●●	●●	●●	●●
Food Science and Technology	●●	●●	●●	●●
Forestry	●●	●●	●●	●●
General	●●●●	●●●●	●●●●	●●●●
Mathematics	●●	●●	●●	●●
Natural Resources and Renewable Materials	●●	●●	●●	●●
Psychology	●●	●●	●●	●●
Public Policy	●●	●●	●●	●●
Science	●●	●●	●●	●●
Women and Gender Studies	●●	●●	●●	●●

● 1-Term ● 2-Term ● 3-Term ● 4-Term

## GRADUATE ADMISSIONS >>

OSU offers more than 100 graduate programs, many of which are ranked among the top in the nation. There are several different paths to begin earning your degree.

How you start your program depends on your academic profile and your English level. How you finish your program is exactly how you pictured: graduating with a master's or PhD from OSU.

→ **Direct Entry:** If you meet the academic and English language requirements for your degree program, you can apply directly to OSU.

To apply, you may need the following required documents: declarations, university transcripts, proof of degree, accounting of time, passport and English test score. An application fee may also apply.

The graduate admissions process is competitive, and an extensive review of your application will be done. Please expect a longer turnaround for an admissions decision. For more information, visit [gradschool.oregonstate.edu/admissions/after-you-apply](https://gradschool.oregonstate.edu/admissions/after-you-apply)

→ **Master's International Direct:** Our Master's International Direct route gives you direct access into your degree program with additional support in the first term. The admissions process is non-competitive, has no application fees and does not require additional test scores. More information on the following pages.

→ **Graduate Pathway:** Our Graduate Pathways allow you to begin earning credits toward your degree even if you do not meet the academic and English requirements for direct entry. The program will help build the academic foundation and essential English language skills you need to succeed in your master's degree. View program-specific entry requirements at [www.intostudy.com/osu/programs](http://www.intostudy.com/osu/programs)

→ **Academic English Language Program:** If you do not meet the direct or Graduate Pathway program entry language requirements, you can enter our Academic English program to improve your academic and language skills. Once you have achieved the required language level, you can progress to a Graduate Pathway program or enter your degree program directly. Learn more on page 18.

PROGRAM	DIRECT		GRADUATE PATHWAY		
	DIRECT ENTRY**	MID*	1-TERM	2-TERM	3-TERM
Program requirements	<ul style="list-style-type: none"> <li>See <a href="https://gradschool.oregonstate.edu/programs">gradschool.oregonstate.edu/programs</a> for specific program entry requirements</li> <li>Additional requirements may include standardized tests like the GMAT or GRE</li> <li>The degree program you select may have additional requirements</li> </ul>	<ul style="list-style-type: none"> <li>Undergraduate degree in relevant discipline (undergraduate degree in any discipline for MSB)</li> <li>For additional requirements, please see chart on page 15</li> </ul>	Undergraduate degree in relevant discipline (undergraduate degree in any discipline for MSB/MBA/MPH)		
Minimum GPA Equivalent	3.0	3.0	3.0	2.5	2.5
TOEFL iBT	91 (18 minimum subscores)	80 (18 subscores)	85 (16 subscores)	80 (16 subscores)	70
IELTS	7.0	6.5 (5.5 subscores)	6.5 (6.0 subscores)	6.5 (5.5 subscores)	6.0
Duolingo	N/A	N/A	120	110	95
Academic English	N/A	N/A	N/A	Level 6	Level 5

**Notes:** \*All entry requirements are subject to change and may vary by program. In addition to meeting minimum admission requirements, you may also need to meet specific program requirements.

\*\*These English requirements are for direct entry to graduate degree programs that have a Graduate Pathway option. English requirements for direct entry to all other graduate programs can be found on the Graduate School website: <https://gradschool.oregonstate.edu/admissions/international/english-language>

Institutional Code TOEFL: 4586 GRE: 4586 GMAT: PW4-DR-05

Dates			
PROGRAM	DIRECT		GRADUATE PATHWAY
	DIRECT ENTRY	MID	
Start Dates	Fall 2022: Sep 2022 Winter 2023: Jan 2023 Spring 2023: Mar 2023 Summer 2023: Jun 2023	Fall 2022: Sep 12, 2022 Winter 2023: Jan 5, 2023 Spring 2023: Mar 30, 2023 Summer 2023: Jun 22, 2023	Fall 2022: Sep 14, 2022 Winter 2023: Jan 3, 2023 Spring 2023: Mar 28, 2023 Summer 2023: Jun 20, 2023

Program start dates vary in availability; view chart on pages 15-17 for more information

[SAMPLE GRADUATE PATHWAY PROGRAM] MS Business			
3-Term Fall: September 14, 2022 Winter: January 3, 2023	Degree Program Components 45 credit hour program 15 credit hours from Pathway apply to degree 30 credit hours remaining toward degree		Program Information
<b>Entry Requirements</b>	<b>Term 1</b>	<b>Course Title</b>	<b>Credit Hours</b>
<ul style="list-style-type: none"> <li>2.5 GPA</li> <li>Undergraduate degree in a relevant discipline</li> </ul>	ALS 165	Technical Communication For International Graduate Students	3
<b>Language Requirements</b>	ALS 174	Professional Writing for Grad Business Students	3
<ul style="list-style-type: none"> <li>TOEFL iBT 70 or</li> <li>IELTS 6.0 or</li> <li>Duolingo 95</li> </ul>	ALS 145	Building Strategies for Graduate Success	3
	COMM 111	Public Speaking	3
	<b>Total</b>		<b>12</b>
	<b>Term 2</b>	<b>Course Title</b>	<b>Credit Hours</b>
	BA 512	Business Analysis and Communication	6
	BA 515	Managerial Decision Tools	3
	COMM 218	Interpersonal Communication	3
	<b>Total</b>		<b>12</b>
	<b>Term 3</b>	<b>Course Title</b>	<b>Credit Hours</b>
	BA 513	Business Legal Environment	3
	BA 514	Operations Management	3
	BA 516	Creating Value in Exchange	3
	BA 517	Markets and Valuation	3
	<b>Total</b>		<b>12</b>

**Progression Requirements**

- 3.0 GPA cumulative and B or higher grades in all graduate level classes
- B or higher grade in all English language classes or TOEFL 91 (18 subscores) or IELTS 7.0

**Notes**

- BA 512 is required for Pathway students but does not apply to MSB program requirements.

These courses are generally delivered through the INTO OSU Center and are for Pathway students only.

[business.oregonstate.edu](https://business.oregonstate.edu)



# MASTER'S INTERNATIONAL DIRECT (MID) >>

Here to support you through a journey of success

At OSU, we've been leading the way for international student support and success in the US. Throughout the years, we've helped international students grow to become leaders in their social and academic communities as they gather the experiences that build their futures.

With Master's International Direct (MID), you are entering directly into an OSU graduate program. From selecting and registering for the right academic courses to accessing jobs, internships and other opportunities through our on-campus resources—we will be there for you every step of the way. You will be working with world-class faculty to create your best work while gaining the customized support to carry you through the international student journey. MID gives you the opportunity to prepare for your future career, building connections and a professional network with global companies. As an MID student, you will receive extra support including:



## INTERNATIONAL ACADEMIC ADVISING

From the day you confirm, your advisors will support you with early registration, making sure you have access to the course options to achieve your personal goals. They will work closely with you throughout your first term to help you adapt to a new educational environment and keep you on track for an on-time graduation.



## COMPREHENSIVE INTERNATIONAL SUPPORT

From your first days, we provide pre-arrival advice, arrival support and acclimation orientations after arrival. Once you're on campus, the support doesn't end. You will have access to cultural assistance and community-building experiences to help you integrate on campus and build connections with friends and faculty.

"The biotech instrument that our company provides services for is mainly for DNA analysis, or virus RNA detection. During the COVID pandemic, many labs experienced [a] shortage of human resources and [a] COVID detection analyzer, the real-time PCR machine. Our company not only provide[s] the machine from refurbishment, but also provide[s] the method of automating the testing process, so that the labs could achieve more sample for testing with less medical technician[s] to operate the process"



HAN-TING, TAIWAN,  
MS in Electrical and Computer Engineering

"I joined Oregon State University, which was a good decision in my life. As an international student, it is difficult to come to a new country and a new educational system. My advisors helped me out quite a lot to understand how this system works. OSU helped me with preparing my mindset for what grad school is like and also helped me to meet with a lot of professors."



AKSHAY, INDIA  
MEng in Civil Engineering  
Structural Engineer at Lewis and Van Vleet, Inc.

\*Estimated credits remaining after MID term/Total credit hours needed to complete degree.

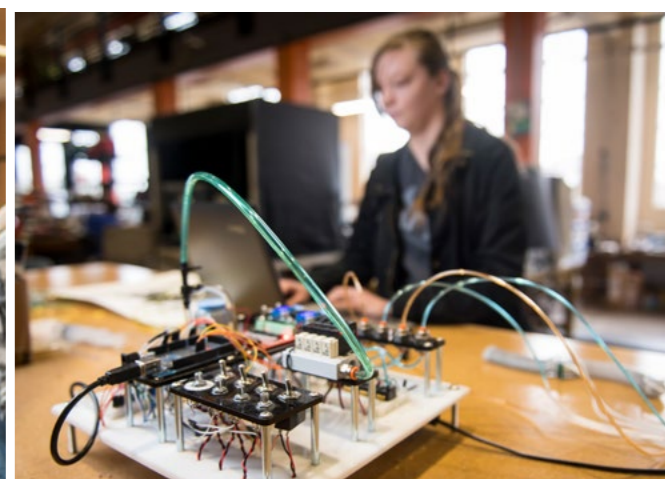
Terms	Start Dates				Credits*	GPA	Entry Requirements	TOEFL	IELTS
	Fall	Winter	Spring	Summer					
<b>Bioengineering</b>									
1-Term (MID)	•				35-37/45	3.0	• Undergraduate degree in relevant discipline • 2.0 in 1 year of college level Math	80 (1.8 subscores)	6.5 (5.5 subscores)
<b>Chemical Engineering</b>									
1-Term (MID)	•				35-37/45	3.0	• Undergraduate degree in relevant discipline • Math through Differential Equations; Chemistry including General, Organic, and Physical; 1 year of Physics • Completion of following courses with a 3.0 average: Fluid Mechanics; Thermodynamics; Heat and Mass Transfer; Chemical Reaction Engineering	80 (1.8 subscores)	6.5 (5.5 subscores)
<b>Civil Engineering</b>									
1-Term (MID)	•				35-37/45	3.0	• Undergraduate degree in relevant discipline • Completion of 3 out of 5 of following courses with a grade equivalent to a 3.0 in each individual course: Engineering Statistics; Engineering Dynamics; Strength of Materials; Structural Analysis; Steel or Concrete Design	80 (1.8 subscores)	6.5 (5.5 subscores)
<b>Computer Science</b>									
1-Term (MID)	•	•	•		35-37/45	3.0	• Undergraduate degree in relevant discipline; 2.0 GPA in 1 year of college level Math; Complete 3/6 upper-division courses with a grade equivalent to a 3.0 in each individual course: Algorithm Design and Analysis; Computer Architecture; Operating; Automata Theory/Theory of Computation; Programming Language Fundamentals; Compilers	80 (1.8 subscores)	6.5 (5.5 subscores)
<b>Electrical and Computer Engineering</b>									
1-Term (MID)	•	•	•		35-37/45	3.0	• Undergraduate degree in relevant discipline; • 2.0 GPA in 1 year of Calculus; • 2.0 GPA in 1 year of Physics; • Complete 3/6 courses with a grade equivalent to a 3.0 in each individual course: AC/DC Circuits/Circuits Analysis; Signals and Systems; Electricity and Magnetism; Power*; Computer Engineering*; Materials and Devices*. *taken in 3rd or 4th year of UG study.	80 (1.8 subscores)	6.5 (5.5 subscores)
<b>Environmental Engineering</b>									
1-Term (MID)	•				35-37/45	3.0	• Undergraduate degree in relevant discipline • Math through Differential Equations; 1 year of Physics; 1 year of General Chemistry • Completion of 1 of 3 courses below with a 3.0 average: Introduction to Environmental Engineering; Water and Wastewater Treatment; Mass and Energy Balances	80 (1.8 subscores)	6.5 (5.5 subscores)
<b>Environmental Sciences</b>									
1-Term (MID)	•	•	•		35-37/45	3.0	• Undergraduate degree in relevant discipline	80 (1.8 subscores)	6.5 (5.5 subscores)
<b>Industrial Engineering</b>									
1-Term (MID)	•	•	•		35-37/45	3.0	• Undergraduate degree in Industrial Engineering, Manufacturing Engineering, or Mechanical Engineering • 2.0 GPA in 1 year college level Math • Completion of all courses below with a 3.0 average: Programming Language Fundamentals; Statistics; Production Engineering/ Production Management; Facilities Design/Facilities Planning	80 (1.8 subscores)	6.5 (5.5 subscores)
<b>MS Business</b>									
1-Term (MID)	•	•	•	•	35-37/45	3.0	• Undergraduate degree in any discipline for winter, spring and summer start terms, Undergraduate degree in Business/Economics/STEM degree for fall start term	80 (1.8 subscores)	6.5 (5.5 subscores)

Entry requirements are subject to change and may vary by program.

## [SAMPLE MID FIRST TERM] Master's International Direct in Bioengineering

1-Term MID Fall: September 12, 2022	First Term Components 45 credit hour program	Program Information
<b>Entry Requirements</b>	<b>Term 1</b>	<b>Course Title</b>
• 3.0 overall GPA, undergraduate degree in relevant discipline	ALS 145	Building Strategies for Grad Success
<b>Additional Entry Requirements</b>	BIOE 5XX	Modeling of Physiological Systems
• 2.0 GPA in 1 year of college level Math	ENGR 520	Department student review for selected course X
• <b>Language Requirements</b>		
• TOEFL 80 (1.8 subscores)		
• IELTS 6.5 (5.5 subscores)		
	<b>Total</b>	<b>10</b>
	<b>Additional Information</b>	
	Academic grid shown is a sample of MID coursework. Please speak with your Academic Advisor to learn more about the availability of courses in your chosen program.	
	<b>Note:</b> Entry requirements are subject to change and may vary by program. Besides meeting minimum admission requirements, you also must meet specific program requirements	

cbee.oregonstate.edu



**Graduate Pathway Programs**

\*Estimated credits remaining after Pathway/Total credit hours needed to complete degree.

\*\*For English Language tests subscores, please see entry requirements table on page 13.

Term	Start Dates				Credits*	Entry Requirements**				Progression Requirements		
	Fall	Winter	Spring	Summer		GPA	Undergraduate degree <sup>1</sup>	TOEFL iBT	IELTS	Duolingo	GPA	Other
<b>Applied Economics</b>												
3-Term	•				30/45	2.5	Undergraduate degree in a relevant discipline	70	6.0	95	3.0	• B or higher grades in all graduate level classes • B or higher grade in all English language classes OR TOEFL 91 (18 subscores) OR IELTS 7.0
2-Term		•			30/45			80	6.5	110		
<b>Bioengineering</b>												
3-Term	•				30/45	2.5	Undergraduate degree in a relevant discipline	70	6.0	95	3.0	• B or higher grades in all graduate level classes • B or higher grade in all English language classes OR TOEFL 91 (18 subscores) OR IELTS 7.0
2-Term		•			30/45			80	6.5	110		
<b>Biostatistics</b>												
3-Term	•				44/59	2.5	Undergraduate degree in a relevant discipline	70	6.0	95	3.0	• B or higher grades in all graduate level classes • B or higher grade in all English language classes OR TOEFL 91 (18 subscores) OR IELTS 7.0
2-Term		•			44/59			80	6.5	110		
<b>Business Administration</b>												
3-Term	•	•			45/60	2.5	Undergraduate degree in any discipline	70	6.0	95	3.0	• B or higher grades in all graduate level classes • B or higher grade in all English language classes OR TOEFL 91 (18 subscores) OR IELTS 7.0 • GMAT 500 with minimum 20th percentile in verbal, quantitative and integrated reasoning, and a minimum analytical writing score of 4 OR GRE total score of 304 with verbal and quantitative scores in at least the 30th percentile and an analytical writing score of 3.5
2-Term		•	•		45/60			80	6.5	110		
1-Term	•	•	•	•	50-51/60	3.0	Undergraduate degree in Business	85	6.5	120		
<b>Chemical Engineering</b>												
3-Term	•				30/45	2.5	Undergraduate degree in a relevant discipline	70	6.0	95	3.0	• B or higher grades in all graduate level classes • B or higher grade in all English language classes OR TOEFL 91 (18 subscores) OR IELTS 7.0
2-Term		•			30/45			80	6.5	110		
<b>Civil Engineering</b>												
3-Term			•		30/45	2.5	Undergraduate degree in a relevant discipline	70	6.0	95	3.0	• B or higher grades in all graduate level classes • B or higher grade in all English language classes OR TOEFL 91 (18 subscores) OR IELTS 7.0
2-Term	•				30/45			80	6.5	110		
<b>Comparative Health Sciences</b>												
3-Term	•			•	30/45	2.5	Undergraduate degree in a relevant discipline	70	6.0	95	3.0	• B or higher grades in all graduate level classes • B or higher grade in all English language classes OR TOEFL 91 (18 subscores) OR IELTS 7.0
2-Term	•	•			30/45			80	6.5	110		
1-Term	•	•	•		35-36/45	3.0		85	6.5	120		
<b>Computer Science</b>												
3-Term	•				30/45	2.5	Undergraduate degree in a relevant discipline	70	6.0	95	3.0	• B or higher grades in all graduate level classes • B or higher grade in all English language classes OR TOEFL 91 (18 subscores) OR IELTS 7.0
2-Term	•	•			30/45			80	6.5	110		
<b>Electrical and Computer Engineering</b>												
3-Term	•				30/45	2.5	Undergraduate degree in a relevant discipline	70	6.0	95	3.0	• B or higher grades in all graduate level classes • B or higher grade in all English language classes OR TOEFL 91 (18 subscores) OR IELTS 7.0
2-Term	•	•			30/45			80	6.5	110		
<b>Environmental Engineering</b>												
3-Term	•				30/45	2.5	Undergraduate degree in a relevant discipline	70	6.0	95	3.0	• B or higher grades in all graduate level classes • B or higher grade in all English language classes OR TOEFL 91 (18 subscores) OR IELTS 7.0
2-Term		•			30/45			80	6.5	110		
<b>Environmental Sciences</b>												
3-Term	•			•	30/45	2.5	Undergraduate degree in a relevant discipline	70	6.0	95	3.0	• B or higher grades in all graduate level classes • B or higher grade in all English language classes OR TOEFL 91 (18 subscores) OR IELTS 7.0
2-Term	•	•			30/45			80	6.5	110		
<b>Global Health</b>												
3-Term	•				45/60	2.5	Undergraduate degree in a relevant discipline	70	6.0	95	3.0	• B or higher grades in all graduate level classes • B or higher grade in all English language classes OR TOEFL 91 (18 subscores) OR IELTS 7.0
2-Term		•			45/60			80	6.5	110		
1-Term			•		50-51/60	3.0		85	6.5	120		
<b>Health Promotion and Health Behavior</b>												
3-Term	•				45/60	2.5	Undergraduate degree in a relevant discipline	70	6.0	95	3.0	• B or higher grades in all graduate level classes • B or higher grade in all English language classes OR TOEFL 91 (18 subscores) OR IELTS 7.0
<b>Industrial Engineering</b>												
3-Term	•				30/45	2.5	Undergraduate degree in a relevant discipline	70	6.0	95	3.0	• B or higher grades in all graduate level classes • B or higher grade in all English language classes OR TOEFL 91 (18 subscores) OR IELTS 7.0
2-Term	•	•			30/45			80	6.5	110		
<b>MS Business</b>												
3-Term	•	•			30/45	2.5	Undergraduate degree in a relevant discipline	70	6.0	95	3.0	• B or higher grades in all graduate level classes • B or higher grade in all English language classes OR TOEFL 91 (18 subscores) OR IELTS 7.0
2-Term	•	•	•		30/45			80	6.5	110		
<b>Materials Chemistry</b>												
3-Term	•				30/45	2.5	Undergraduate degree in a relevant discipline	70	6.0	95	3.0	• B or higher grades in all graduate level classes • B or higher grade in all English language classes OR TOEFL 91 (18 subscores) OR IELTS 7.0
1-Term	•				35-36/45	3.0		85	6.5	120		
<b>Mathematics</b>												
3-Term			•		30/45	2.5	Undergraduate degree in a relevant discipline	70	6.0	95	3.0	• B or higher grades in all graduate level classes • B or higher grade in all English language classes OR TOEFL 91 (18 subscores) OR IELTS 7.0
2-Term	•				30/45			80	6.5	110		

Entry and progression requirements are subject to change and may vary by program.  
<sup>1</sup> Departments may be looking for specific prerequisite courses in determining relevant undergraduate degree for admissibility to the Graduate Pathway Program.

Term	Start Dates				Credits*	Entry Requirements**				Progression Requirements		
	Fall	Winter	Spring	Summer		GPA	Undergraduate degree <sup>1</sup>	TOEFL iBT	IELTS	Duolingo	GPA	Other
<b>Mechanical Engineering</b>												
3-Term	•				30/45	2.5	Undergraduate degree in a relevant discipline	70	6.0	95	3.0	• B or higher grades in all graduate level classes • B or higher grade in all English language classes OR TOEFL 91 (18 subscores) OR IELTS 7.0
2-Term	•	•			30/45			80	6.5	110		
1-Term	•	•	•		35-36/45	3.0		85	6.5	120		
<b>Environmental and Occupational Health</b>												
3-Term	•				30/60	2.5	Undergraduate degree in a relevant discipline	70	6.0	95	3.0	• B or higher grades in all graduate level classes • B or higher grade in all English language classes OR TOEFL 91 (18 subscores) OR IELTS 7.0

Entry and progression requirements are subject to change and may vary by program.  
<sup>1</sup> Departments may be looking for specific prerequisite courses in determining relevant undergraduate degree for admissibility to the Graduate Pathway Program.



**Oregon State University students and professors conducting climate change research in the Cascade Mountains. Mount Hood, Oregon.**



Accredited by  
**CEA**

## ACADEMIC ENGLISH >>

Our Academic English program prepares you for a university degree by improving your English language skills and providing you with the academic tools you need to succeed. Students like you will learn English in and out the classroom and you will be taught by our qualified and experienced faculty. You will have opportunities to practice your English with native speakers during your everyday life. On top of that, you will receive customized support for international students to help you transition to life at a US university.

### What You Will Learn

- Understand US values in an academic setting
- Present spoken and written ideas accurately and effectively in English
- Write research papers with proper use of citations and references
- Read, understand and critically evaluate academic texts
- Understand and use vocabulary common to academic disciplines
- Take useful and accurate notes in academic lectures and presentations

### Estimated Academic English Level Based on Test Scores

The table below shows what your estimated level of AE will be if you submit standardized test scores with your application. Students will be tested during Orientation to determine their final AE level placement.

Estimated AE Level	TOEFL iBT	IELTS	IELA
2	32-44	3.5-4.0	146 or less
3	45-59	4.5-5.0	147-161
4	60	5.5	162
5	70	6.0	169
6	80	6.5	176

### Guaranteed Level

If you score lower on the placement test than your estimated level based on standardized tests, you are guaranteed to be placed no more than one level lower than your estimated level. If you score higher than your estimated level, you will be placed according to your placement test score.

### Academic Study Plan Calculator

Our Academic Study Plan Calculator will help you estimate your study plan. Simply add your academic program and English scores and receive an estimated study plan showing your duration of study. <https://estimateus.intostudy.com>

### Key Program Facts

- Each term is 11 weeks
- High school diploma required
- No English language requirement; students assessed and placed upon arrival
- Minimum age 16
- 7 levels of instruction from true beginner to advanced
- 18 hours of instruction per week

### Progression Requirements

Must meet academic entry requirements for desired program

#### International Year One/Undergraduate Transfer Program 4-Term

Completion of AE Level 3 with C/Pass or higher in all classes

#### International Year One/Undergraduate Transfer Program 3-Term

Completion of AE Level 4 with C/Pass or higher in all classes

#### Undergraduate Transfer Program 2-Term

Completion of AE Level 5 with C/Pass or higher in all classes

#### Undergraduate Transfer Program 1-Term

Completion of AE Level 6 with C/Pass or higher in all classes

#### Graduate Pathway 3-Term

Completion of AE Level 5 with C/Pass or higher in all classes

#### Graduate Pathway 2-Term

Completion of AE Level 6 with a C+/Pass or higher in all classes

#### International Direct

Completion of AE Level 5 with C/Pass or higher in all classes

#### Direct Transfer Undergraduate

Completion of AE Level 6 with C/Pass or higher in all classes

#### Direct Entry Graduate

Completion of AE Level 6 with B/Pass or higher in all classes. Please verify with the graduate program if AE is considered as an English entry requirement. To find your program's contact, visit [gradschool.oregonstate.edu/programs](https://gradschool.oregonstate.edu/programs). Application deadlines vary and additional requirements may be needed depending on program.



Find out more at  
[www.intostudy.com/osu/academic-english](http://www.intostudy.com/osu/academic-english)

## STUDY ABROAD WITH ENGLISH

Study Abroad with English combines Academic English and OSU undergraduate classes. You will earn college credits in your field of interest without enrolling in a long-term degree. The program is customized for your English level and academic interest. Courses are available in liberal arts, business, engineering, public policy and the sciences.

### Program Overview

**Part 1:** Academic English

**Part 2:** Academic English Classes and OSU Classes

### Key Program Facts

- Each term is 11 weeks
- Minimum age 16
- High school diploma required with 2.5 GPA or completion of at least one year of study at a university overseas with a minimum 2.25 GPA

#### Part 1: No English Language Requirement

#### Part 2: English language requirements:

TOEFL iBT 60 **or** IELTS 5.5 **or** IELA 162 **or** Duolingo 90

Completion of Level 4 with minimum C/Pass grades in Study Abroad with English Part 1 or Academic English

Find out more at

[www.intostudy.com/osu/study-abroad-with-english](http://www.intostudy.com/osu/study-abroad-with-english)

## VISITING INTERNATIONAL STUDENT PROGRAM

Experience life on an American college campus while taking OSU credit-bearing classes as a non-degree student for up to one year. You will have access to OSU courses in liberal arts, business, engineering, public policy and the sciences. Other courses may be available on a case-by-case basis.

### Key Program Facts

- Each term is 11 weeks
- Minimum age 16
- High school diploma required with 3.0 GPA or completion of at least one year of study at a university overseas with a minimum 2.25 GPA

#### English language requirements:

TOEFL iBT 80 (minimum 16 subscores) **or** IELTS 6.5 **or** IELA 176 **or** Duolingo 110 **or** Completion of AE Level 6

Learn more at

[www.intostudy.com/osu/visiting-international-student-program](http://www.intostudy.com/osu/visiting-international-student-program)

## SUMMER AND SPECIAL PROGRAMS

INTO OSU offers customized, short-term programs for groups of 10 or more. We offer English teacher training programs and full-time academic programs to improve English and experience US university study. We also offer part-time programs available on a B2 or tourist visa exploring various focus areas.

To learn more about our current programs or to submit a request for a customized program, please visit [intoosu.oregonstate.edu/special-programs](http://intoosu.oregonstate.edu/special-programs) or email [into.specialprograms@oregonstate.edu](mailto:into.specialprograms@oregonstate.edu)



### Start Dates

Program	Fall 2022	Winter 2023	Spring 2023	Summer 2023
Academic English	Sep 14, 2022	Jan 4, 2023	Mar 29, 2023	Jun 21, 2023
Study Abroad with English Part 1				
Study Abroad with English Part 2				
Visiting International Student Program				

Invest in your degree.  
Invest in your future.  
Invest in you.

With a strong foundation and on-the-job experiences, your education can determine how far you go in your career. Based on your program, you will receive the level of support that corresponds to your academic profile, English language scores and budget.

Whether you're enrolled in our Pathway programs, International Direct, Undergraduate Transfer Program, Academic English or Master's International Direct programs, you will have access to our Pre-arrival Success Services and airport pickup when you arrive. You can also enjoy continued housing and meal options during university holidays and breaks.

**Programs** OSU offers four terms per year (Fall, Winter, Spring, Summer). Each term is around 11 weeks or three months long.

**Undergraduate** Undergraduate Programs include International Year One (IYO), Undergraduate Transfer (UTP) and International Direct (ID)

Program Length	1 Term	2 Terms	3 Terms	4 Terms
	UTP	UTP	ID, IYO, UTP	IYO, UTP
<b>TUITION AND FEES</b>	<b>\$13,800</b>	<b>\$27,600</b>	<b>\$35,925</b>	<b>\$42,800</b>
Housing and Meals*	\$4,620	\$9,240	\$13,860	\$18,480
Insurance	\$1,250	\$2,500	\$3,750	\$5,000

**Graduate** Graduate Programs include Pathway, Masters International Direct (MID) and Direct.

Program Length	Pathway			Pathway-MBA and MSB			MID	MID (MSB)	Direct-Engineering	Direct-MBA
	1 Term	2 Terms	3 Terms	1 Term <sup>3</sup>	2 Terms	3 Terms	1 Term	1 Term	3 Terms <sup>1</sup>	3 Terms <sup>2</sup>
<b>TUITION AND FEES</b>	<b>\$12,200</b>	<b>\$24,400</b>	<b>\$31,890</b>	<b>\$16,070</b>	<b>\$32,140</b>	<b>\$41,910</b>	<b>\$12,200</b>	<b>\$16,070</b>	<b>\$32,490</b>	<b>\$41,880</b>
Insurance	\$1,250	\$2,500	\$3,750	\$1,250	\$2,500	\$3,750	\$1,250	\$1,250	\$3,750	\$3,750

### Academic English

	Academic English/ Study Abroad with English Part 1	Visiting International Student Program/Study Abroad with English Part 2
<b>Program Length</b>	<b>1 Term</b>	<b>1 Term</b>
<b>TUITION AND FEES</b>	<b>\$5,950</b>	<b>\$11,975</b>
Housing and Meals*	\$4,620	\$4,620
Insurance	\$1,250	\$1,250

### Campus Housing

**Undergraduate, Graduate and Academic English**  
Triple suite style rooms: **\$4,620/term**

*On-Campus housing prices includes the following amenities:*

- \$950 meal plan per term
- 20% off at all on-campus dining locations
- Housing during breaks and holidays
- Laundry services
- Wi-Fi and all other utilities
- PDX shuttle service for first-time arrival
- Sheets, bedding, pillow and towels
- Welcome bag with snack for your arrival
- Residential, academic and cleaning/maintenance staff
- 24-hour arrival and move-in support

\*Housing and meals are based on estimated costs and may vary depending on housing and meal plans selected and personal preference.

<sup>1</sup>Based on 12 credits per term <sup>2</sup>Based on 9 credits per term <sup>3</sup>1-term Graduate Pathway is MBA only

**Are you an F-1 student?** You will need to provide proof of funding in order to get your I-20. Proof of funding is a way a student shows they have sufficient funds (usually via a recent bank statement) to live and study full-time in the US for up to one academic year. This is different from the cost of attendance OR a statement of account. The proof of funding amount will not be an amount that is billed to you and is solely for immigration purposes. To find out more about proof of finances for immigration purposes, visit [www.intostudy.com/en/osu/costs](http://www.intostudy.com/en/osu/costs)

## Scholarships

Find out more about scholarships [www.intostudy.com/osu/scholarships](http://www.intostudy.com/osu/scholarships)

Name	Amount		Eligibility and Learn More	Tuition and fees payable first year <sup>1</sup>	
<b>Undergraduate Scholarships</b> Entry Routes: International Direct (ID), International Year One (IYO), Undergraduate Transfer Program (UTP), Transfer					
<b>Scholarships</b>	<b>Provost's Scholarships for Excellence</b>	<b>\$24,000</b> (\$6,000 per year)	ID, IYO, UTP, Transfer	<ul style="list-style-type: none"> <li>• No application process</li> <li>• New students with a GPA of 3.5+ qualify for consideration or IB Diploma score of 30+ or A-level with minimum of two Bs and one C</li> <li>• UTP or Transfer students with GPA of 3.25+ qualify for consideration</li> <li>• Renewable with 3.0+ GPA</li> <li>• No application or action required for renewal</li> <li>• Students already receiving a Regional Award are not eligible</li> </ul>	<b>\$29,925</b>
	<b>Regional Scholarship</b>	<b>Up to \$5,000</b> on first year	ID, IYO, UTP, Transfer	<ul style="list-style-type: none"> <li>• No application process</li> <li>• This scholarship is not merit-based</li> <li>• Limited availability: first come, first served</li> <li>• Amount subject to change - limited awards at maximum value</li> <li>• Contact your INTO regional officer or OSU representative for more information</li> </ul>	<b>\$30,925</b>
	<b>Continued Success Scholarship</b>	<b>\$9,000</b> (\$3,000 per year)	ID, IYO, UTP	<ul style="list-style-type: none"> <li>• No application process and based on cumulative GPA of ID, IYO or UTP</li> <li>• Students who achieve a 3.75 - 4.0 GPA will automatically qualify for a \$5,000 annual scholarship</li> <li>• Students who achieve a 3.5 - 3.74 GPA will automatically qualify for a \$3,000 annual scholarship</li> <li>• Renewable for up to three years</li> <li>• Renewable with a 3.5+ GPA. No action required for renewal</li> <li>• Students already receiving the Provost's Scholarship for Excellence or Regional Award are not eligible for this award</li> </ul>	<b>N/A</b>
	<b>\$15,000</b> (\$5,000 per year)		<b>N/A</b>		
<b>Regional Awards</b>	<b>Latin American Regional Award</b>	<b>\$32,000</b> (\$8,000 per year)	ID, IYO	<ul style="list-style-type: none"> <li>• Students who are residents of countries in Latin America will automatically receive the award for up to four years</li> <li>• Automatically renewable with GPA of 2.0+</li> <li>• For a full listing of country eligibility, email <a href="mailto:international.scholarships@oregonstate.edu">international.scholarships@oregonstate.edu</a></li> </ul>	<b>\$27,925</b>
	<b>South Asian Regional Award</b> (India, Pakistan, Bangladesh, and Nepal)	<b>\$32,000</b> (\$8,000 per year)	ID, IYO	<ul style="list-style-type: none"> <li>• Students who are residents of countries in South Asia will automatically receive the award for up to four years</li> <li>• Automatically renewable with GPA of 2.0+</li> <li>• For a full listing of country eligibility, email <a href="mailto:international.scholarships@oregonstate.edu">international.scholarships@oregonstate.edu</a></li> </ul>	<b>\$27,925</b>
	<b>Southeast Asia and Indochina Regional Award</b> (Thailand, Vietnam, Indonesia, Malaysia, Singapore, Brunei, and Other Indochina)	<b>\$32,000</b> (\$8,000 per year)	ID, IYO	<ul style="list-style-type: none"> <li>• Students who are residents of countries in Southeast Asia or Indochina will automatically receive the award for up to four years</li> <li>• Automatically renewable with GPA of 2.0+</li> <li>• For a full listing of country eligibility, email <a href="mailto:international.scholarships@oregonstate.edu">international.scholarships@oregonstate.edu</a></li> </ul>	<b>\$27,925</b>
	<b>Europe and Central Asia Regional Award</b> (Europe Union, Turkey, UK, Russia, and CIS)	<b>\$40,000</b> (\$10,000 per year)	ID, IYO	<ul style="list-style-type: none"> <li>• Students who are residents of countries in Europe and Central Asia will automatically receive the award for up to four years</li> <li>• Automatically renewable with GPA of 2.0+</li> <li>• For a full listing of country eligibility, email <a href="mailto:international.scholarships@oregonstate.edu">international.scholarships@oregonstate.edu</a></li> </ul>	<b>\$25,925</b>
	<b>African Regional Award</b>	<b>\$40,000</b> (\$10,000 per year)	ID, IYO	<ul style="list-style-type: none"> <li>• Students who are residents of countries in Africa will automatically receive the award for up to four years</li> <li>• Automatically renewable with GPA of 2.0+</li> <li>• For a full listing of country eligibility, email <a href="mailto:international.scholarships@oregonstate.edu">international.scholarships@oregonstate.edu</a></li> </ul>	<b>\$25,925</b>
<b>Graduate Scholarships</b> Entry routes: Graduate Pathway (GPW), Master's International Direct (MID)					
<b>Regional Scholarship</b>	<b>Up to \$7,500</b> on first year	GPW, MID	<ul style="list-style-type: none"> <li>• No application process</li> <li>• This scholarship is not merit-based</li> <li>• Limited availability: first come, first served</li> <li>• Amount subject to change - limited awards at maximum value</li> <li>• Contact your INTO regional officer or OSU representative for more information</li> </ul>	<b>\$24,390*</b>	
<b>Continued Success Scholarship</b>	<b>\$6000</b> (\$3,000 per year)	GPW, MID	<ul style="list-style-type: none"> <li>• No application process and based on cumulative GPA of GPW or MID</li> <li>• Students who achieve a 3.75 - 4.0 GPA will automatically qualify for a \$5,000 annual scholarship</li> <li>• Students who achieve a 3.5 - 3.74 GPA will automatically qualify for a \$3,000 annual scholarship</li> <li>• Renewable for up to two years</li> <li>• Renewable with a 3.5+ GPA. No action required for renewal</li> <li>• Students awarded with graduate tuition remission status through OSU Assistantships are not eligible for this award</li> </ul>	<b>N/A</b>	
	<b>\$10,000</b> (\$5,000 per year)			<b>N/A</b>	

Scholarship amounts and availability requirements are subject to change. All OSU scholarships listed above require a non-resident tuition status. You must be accepted to the university first in order to receive a scholarship. Amounts subject to change. Limited awards at maximum value. \*Represents tuition for all Graduate Pathways except Business and MBA

<sup>1</sup>These are estimated tuition payments assuming a student receives the maximum scholarship value listed for this program.

All prices are estimated from 2021-22 and are subject to change. Please visit [www.intostudy.com/en/osu/costs](http://www.intostudy.com/en/osu/costs) for exact pricing.

**What do students get out of campus housing?** Enrich your US university experience by living on campus. See page 6.

For details about Terms and Conditions, Country Scales and English Waivers, visit [www.intostudy.com/osu/terms](http://www.intostudy.com/osu/terms)

# HOW TO APPLY

Choose from two easy ways to apply

**1** Apply via your local INTO educational counselor

**2** Apply online  
Complete our online application form:

INTO OSU Programs:  
[apply.intostudy.com/osu](http://apply.intostudy.com/osu)

International Direct (Undergraduate):  
[apply.intostudy.com/osu](http://apply.intostudy.com/osu)

Direct Graduate:  
[oregonstate.force.com/GradAppLogin](http://oregonstate.force.com/GradAppLogin)

Master's International Direct:  
[apply.intostudy.com/osu](http://apply.intostudy.com/osu)

We also offer online programs.  
For more information, contact your INTO Regional Representative or Education Counselor.



## INTO Oregon State University

Oregon State University  
1701 SW Western Boulevard  
Corvallis, OR 97333  
USA

T: +1 541 737 2464  
F: +1 541 737 4220  
E: [intladmit@oregonstate.edu](mailto:intladmit@oregonstate.edu)

[www.intostudy.com/osu](http://www.intostudy.com/osu)

PATHWAY ADMISSION  
[www.intostudy.com/osu](http://www.intostudy.com/osu)

DIRECT ADMISSION  
[admissions.oregonstate.edu/international](http://admissions.oregonstate.edu/international)



For more information on International Admissions, scan here:

- [facebook.com/INTO.oregonstate](https://facebook.com/INTO.oregonstate)
- [twitter.com/INTO\\_OSU](https://twitter.com/INTO_OSU)
- [instagram.com/INTOoregonstate](https://instagram.com/INTOoregonstate)
- [myin.to/OSU\\_YouTube](https://myin.to/OSU_YouTube)

Chat online

with our students!



[www.intostudy.com/chat-osu](http://www.intostudy.com/chat-osu)



WeChat



YOU VISIT VIRTUAL TOUR  
[www.youvisit.com/tour/oregonstate](http://www.youvisit.com/tour/oregonstate)



Through innovative partnerships with leading universities, we expand opportunities for higher education, ensuring success and transforming the lives of our students and staff.



Working across the globe, INTO Giving supports projects that increase access to education and improve the quality of teaching and learning. For more information, visit [www.into-giving.com](http://www.into-giving.com)

## Discover more online

For counselors:  
[partnerportal.intoglobal.com/osu](http://partnerportal.intoglobal.com/osu)

For students:  
[www.intostudy.com/osu](http://www.intostudy.com/osu)

## Connect with us



Education counselor's stamp